

A woman with long brown hair, wearing a white strapless dress, a gold necklace with a heart pendant, a gold bracelet, and a ring, stands in a hallway with grey columns. She is smiling slightly and looking towards the camera. Her right hand is resting on a column to her left. The name 'Asmi Aderay' is written in a white cursive font across her chest.

*Asmi Aderay*



**FOR THE LOVERGIRLS, YEARNERS,  
HOPEFUL ROMANTICS TO FEEL SEEN.**

– Asmi Aderay

# About me


A total powerhouse, mixed with the essence of elegance, Asmi Aderay brings raw emotion and timeless charm to modern pop and rock. With a voice that feels both intimate and commanding, she gives voice to the lone romantics — the ones still craving real connection in a world that has forgotten real romance.

Her songs are filled with passion, heartbreak, and the kind of yearning that makes you believe in love all over again. From soulful ballads to anthemic pop moments, Asmi takes her listeners on a journey through the beauty and ache of feeling deeply.

Graduated from the prestigious Berklee College of Music, with a Bachelor's degree in Vocal Performance and a minor in Creative Entrepreneurship, Asmi has had electrifying showcases, like Groovalicious and Women Who Rock, alongside her solo gigs such as: Asmi Aderay Live at the Caf, Asmi Aderay live at the Burren, reveal her unique artistry and emotional depth. Blending indie-pop, rock and singer-songwriter elements, Asmi's music explores themes of love and loss, resonating with “lone romantics” who cherish introspection. With songs like “Someone Real” and her EP “Romance without Refuge,” she captures the essence of romance's highs and lows. Join Asmi Aderay on her journey, where heartfelt melodies intertwine with unfiltered emotions.



# My Music




## Leaving Still Wanting You

Asmi

▶ + ...

#	Title	Duration
1	<a href="#">Someone Real</a> Asmi	02:45
2	<a href="#">Heavy Heart</a> Asmi	02:36
3	<a href="#">My Version of You</a> Asmi	02:51
4	<a href="#">Kill The Lover</a> Asmi	02:37




### Someone Real

Preview Asmi

+ Save on Spotify

... ▶




### Heavy Heart

Preview Asmi

+ Save on Spotify

... ▶




### My Version of You

Preview Asmi

+ Save on Spotify

... ▶




### Kill The Lover

Preview Asmi

+ Save on Spotify

... ▶




### Romance Without Refuge

Preview Asmi

+ Save on Spotify

... ▶



### Thought of Being in Love

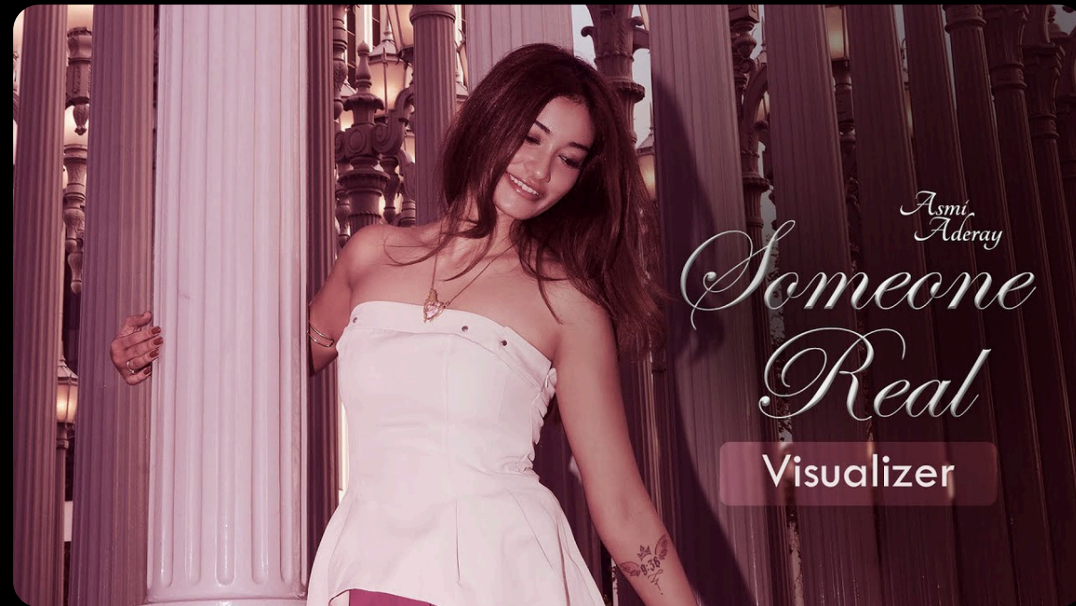
Preview Asmi

+ Save on Spotify

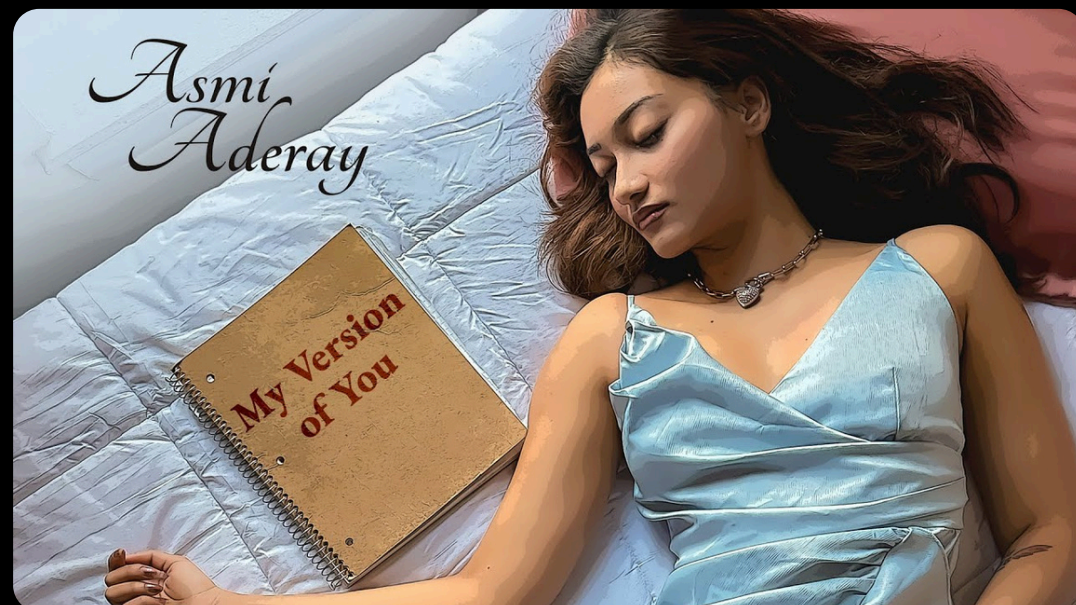
... ▶

# My Videos

Original Music Video



Someone Real



My Version Of You

Cover Songs



Skyfall | Adele | Cover by ASMI



What was i made for | Cover by ASMI

Live Performance



Will You Still Love Me Tomorrow



Alright

[View All](#)

# Testimonials

Asmi Aderay's voice carries a distinct richness that complements the indie-pop and R&B genres she frequently explores. Asmi's natural talent for conveying emotion allows her to create a powerful connection with her audience, bringing genuine depth to every performance. Her ability to engage with listeners on an emotional level, combined with her artistic versatility, sets her apart as a true talent with unlimited potential.



**Debo Ray**

**Grammy Nominated Vocalist and Educator**



**Tom Baskett**

**Professor of Voice at Berklee College of Music**

Asmi Aderay is an exceptional vocalist, easily among our brightest song stylists at Berklee. Working with her for the past two years has been an absolute joy. She is consistently poised, professional, and prepared—always gig-ready. Asmi's tone is rich and appealing; her vocal delivery is heartfelt and passionate, whether rendering classic R&B or indie-pop soul.

Asmi Aderay is a gifted vocalist with a remarkable ability to captivate audiences through her powerful voice and commanding stage presence. Her dynamic interpretation and charismatic energy brought songs to life, enthraling the audience. Asmi's blend of technical skill, emotional depth, and magnetic personality makes her a true force on stage and a joy to collaborate with.



**Celia Slattery**

**Associate Professor, Berklee College of Music**



# Get in Touch

## MANAGEMENT

music@reeldrama.com

## US BOOKING

asmiaderay@gmail.com

## UK/EU BOOKING

asmiaderay@gmail.com

## US PRESS

music@reeldrama.com



[www.asmiaderay.com](http://www.asmiaderay.com) 🔍